

EMPTY THE BIN BAG

Guide to waste recycling



Provincia del V.C.O. - Consorzio Obbligatorio di Bacino - Verbania



Città di Baveno



A new system of waste collection will be introduced in November in an effort to encourage and improve separation of waste for recycling. This will involve:

- separating domestic waste according to type of recyclable material
- collecting separated waste in special sacks distributed by the Town Council
- special collection of polluting or dangerous waste, which must be disposed of by appropriate processes.

Each household or business will be given a **waste disposal card** to be used for the issue of regulation sacks and bins, and for access to home collection services.

GLASS



Yes, you can recycle

Bottles

Jars

Sheet glass in small pieces



Did you know that one plate or cup is enough to pollute the contents of a whole bottle bank?



Never put tempered glass (Pyrex), light bulbs or any kind of CERAMIC or CHINA in the glass bin.



OUR GOAL IS 80%

Waste disposal is a problem.

The Mandatory Area Consortium (COB) of Verbania has been instituted by law to coordinate collection of waste in 46 municipalities. At the COB we believe that the waste problem can be solved by good organisation rather than sophisticated technology.

Our aim is to achieve 80% recycling of waste in our area, by improving separate waste collection and giving users incentives to do so.

This short guide is designed to explain the new system of Council-issued sacks and to restate the information on how and what to recycle.

By following these guidelines, domestic and commercial users can make a contribution to solving the waste disposal problem, and save money at the same time.

The **president of COB**
Maurizio Oldrini
September 2006

METAL/PLASTIC



Yes, you can recycle

Tins
Metal bottle **tops**
Small metal objects
Aluminium food trays

Drinks **cans**
Metal jar lids
Old **saucepans**
Metal foil



Different metals (e.g. aluminium, iron, tin) can be put in the same sack (they are separated later). Important: please rinse tins, especially those used for pet food.

You can put metal and plastic in **the same sack**.

PLASTIC/METAL



Yes, you can recycle

Plastic **bottles** for mineral water, oil, juice, milk
Small plastic **bottles** for creams, sauces, etc
Plastic yoghurt containers
Ice-cream take-away containers

Polythene and cellophane food bags (e.g. for pasta, rice, crisps and snacks, sweets, frozen food, plastic shopping bags, detergent bags, etc)

Net fruit and vegetable bags

Plastic and polystyrene **food trays** and packaging (e.g. for ham, cheese, fruit, vegetables, etc, and plastic egg boxes)



All plastic containers should be emptied and rinsed out. Containers and bottles should preferably be flattened.



Plastic boxes and bags for **packaging** items of clothing (shirts, underwear, socks, ties, etc)

Containers for liquid detergent, soap, household cleaning products, shampoo etc, cosmetics, distilled water

Plastic jars for cosmetics, ink, wipes etc

Cling film (for food packaging) and polythene wrapping material

Plastic **crates for fruit**/vegetables and other foodstuffs

Polystyrene **shells, bars and chips** used for packaging

Plastic bands for tying parcels



Warning: not all plastic can be recycled. Anything not on this list must be put in the non-recyclable rubbish sack.

CLOTHING



Yes, you can recycle

Used **clothing**

Shoes

Leather goods

Clothing should be deposited in the Humana bins located:

Romanico

Loita

Feriolo Parcheggio Via Arnold

Baveno Via Stazione

Oltrefiume Piazza parco giochi



Clothing collected in the Humana bins is intended for re-use, so clothes must be clean, dry and enclosed in a bag.



GARDEN



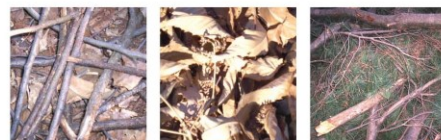
Yes, you can recycle

Grass

Pruning waste

Straw from demijohns

Garden waste



Branches should be bound in bundles with raffia.

A maximum of three sacks/Bundles per household can be collected every week

Don't forget that the best way of dealing with kitchen and garden waste is the old-fashioned but ever-useful compost heap. All you need is a few square metres of ground, preferably in a shady place. As your waste is collected, add it carefully to the heap, and in time it will turn into excellent soil you can use in the garden. You can put leaves, chopped-up branches, kitchen waste, ashes, etc on your heap.

PAPER/CARDBOARD



Yes, you can recycle

Papers and **magazines**, office paper

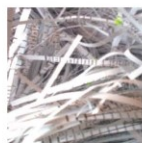
Any kind of wrapping paper and cardboard packaging

Boxes, i.e. milk and fruit juice marked (CA)

Old **books**



Both large and small cardboard boxes should be opened out to avoid unnecessary bulk.



KITCHEN WASTE



Yes, you can recycle

Fruit and vegetable

Old **bread**

Faded flowers

Tea bags

Meat and fish scraps

Cat beddings

Ashes

Kitchen paper

Citrus fruit peel

Egg **shells**

Coffee grounds



All kitchen waste collected goes to make compost for agricultural purposes. Please DO NOT put plastic, glass or any other foreign material into the organic container. To avoid dirtying the bin you can use sheets of paper or a paper bag, or biodegradable bags available on the market.

Kitchen and garden waste are collected from your house and taken to composting facilities. It **costs less** to convert your organic waste into compost than it does to dispose of non-separated waste.

BULKY WASTE

Bulky waste will be collected from your house/business by appointment (telephone 0323-518731). A maximum of 4 or 5 articles (not more than two cubic metres) can be collected at once. Each household/business may book one collection at a time. After this collection a new appointment can be made.



Items that can be collected:

Furniture

Mattresses

Tiles

Pallets and other **wooden packaging**

Discarded electronic equipment (TVs, VCRs, computers)

Domestic **appliances**

Sinks and other sanitary fittings

Terracotta plant pots

To use this service you must have your waste disposal card



We do not clear cellars or attics. If you need this service, a fee is payable.

OTHER REFUSE



Any material containing asbestos-cement (Eternit) is classed as "special waste" and must be disposed of by authorised firms.

Expired medications: take to the chemist's.

Used batteries: put in dedicated containers at retail outlets

Printer cartridges: Cartridges of toner for laser printers and photocopiers, cartridges for ink-jet fax machines, printers and calculators and ribbon for needle printers. These articles are collected in special containers located in certain public buildings. Users who generate high quantities of this kind of waste may request a free collection service by telephoning 0323-408137.

Mineral oil (engine oil): must be taken to authorised garages.



REFUSE CARD

WHAT IS IT?

It is a personal non-transferable, card which identifies all families and activities in the area.

WHAT IS IT USED FOR?

- To obtain "regulation bags"
- To gain access to heavy materials collect-at-home services
- To obtain paper, glass and wasted food containers from Con.Ser.V.C.O s.p.a.

IF YOU LOSE YOUR CARD

After called to book an appointment, go to the Council Offices, Piazza Dante Alighieri, where you can replace your card.

Consorzio Obbligatorio
di Bacino - Verbania

CARTA DEI RIFIUTI

REFUSE WHICH CANNOT BE RECYCLED

Refuse which cannot be recycled should be collected solely in special "REGULATION BAGS" supplied by the Council and available in two sizes 30 and 120 litres. Every user can, by using his own card, obtain the type and quantity of bags necessary for his own use. A certain number of bags proportionate to the size of the family and type of activity, will be supplied free of charge. The remainder will be debited to the bill of the following year at the price of 0,50 and 2,50 euros.



Refuse which cannot be recycled is for example:

Sweepings

Nappies and sanitary towels

Throw away articles

Bags and **filters** for vacuum cleaners

Greasy paper

Cigarette ends

Indestructible plastics



The use non-approved bags is subject to a fine of 50 euros (art. D.Lgs. 22/97)

CALENDAR

Valid from **Monday 6 November**

MONDAY	TUESDAY	WEDNESDAY	THURSDAY	FRIDAY	SATURDAY
REFUSE NOT RECYCLABLE	PLASTIC/METAL	KITCHEN WASTE GARDEN WASTE	GLASS	PAPER	KITCHEN WASTE

Selected businesses will have a collection of **cardboard** on Monday and Thursday.