



# IL RIFIUTOLOGO

A to Z manual of waste



The waste management system of Cogesa's 5 participating communities has five stages.

- Stage 1: consignment of their waste by users
- Stage 2: transport of that waste to the treatment plants
- Stage 3: waste treatment
- Stage 4: recovery of all recyclable materials such as organic matter, paper, glass, plastic, aluminum, steel, wood and waste from electrical and electronic equipment
- Stage 5: landfill disposal of non-recyclable materials

The most important stage for correct waste management, from an environmental and economic point of view, is stage 1.

In stage 1, the management model of COGESA SpA separates the materials into 8 separate categories so as to increase the amount of material available for recycling. Those 8 categories are as follows:

- ORGANIC MATTER
- PLASTICS and METALS
- GLASS
- PAPER and CARDBOARD
- NON-RECYCLABLE DRY WASTE
- BULKY ITEMS
- USED BATTERIES
- OUT OF DATE DRUGS & MEDICINES

Depending on the community, the materials are passed to COGESA by the individual users via a combination of the following collection services:

- Door to door collection from home
- Street collection using special bins
- Delivery to the 'Ecocentre' (refuse tip)

**A**

TYPE OF WASTE	WHERE TO CONFER
abrasive paste (empty container)	<i>plastic and metals</i>
accumulators	<i>refuse tip or bulky item collection</i>
acetone (in an empty container)	<i>plastics and metals</i>
acids (in an empty container)	<i>plastics and metals</i>
adhesive tape or gummed paper for packaging use	<i>plastic and metals</i>
aerosol cans	<i>plastic and metals</i>
aerosols and aerosol parts	<i>refuse tip or bulky item collection</i>
aggregates (in quantities as specified by the urban sanitation regulations)	<i>refuse tip or bulky item collection</i>
air fresheners (for the car)	<i>dry, non-recyclables</i>
air fresheners (non refillable)	<i>plastic and metals</i>
alarm clocks and watches	<i>refuse tip or bulky item collection</i>
aluminium cans	<i>plastic and metals</i>
aluminium film	<i>plastic and metals</i>
aluminium pans	<i>refuse tip or bulky item collection</i>
aluminium pans	<i>refuse tip or bulky item collection</i>
aluminium paper / foil	<i>plastic and metals</i>
aluminium strips / sections (in quantities as specified by the urban sanitation regulations)	<i>refuse tip or bulky item collection</i>
aluminium trays	<i>plastic and metals</i>
ammonia (in an empty container)	<i>plastics and metals</i>
amplifiers	<i>refuse tip or bulky item collection</i>
animal feathers	<i>home compost or food waste collection</i>
antenna cables (in quantities as specified by the urban sanitation regulations)	<i>refuse tip or bulky item collection</i>
anti-moth products (in an empty container)	<i>plastics and metals</i>
anti-rust (in an empty container)	<i>plastics and metals</i>

**A-B**

aquariums	<i>refuse tip or bulky item collection</i>
archive files	<i>paper and cardboard</i>
armchairs	<i>refuse tip or bulky item collection</i>
articles for packaging shirts and the like (collars, bibs and tissue paper)	<i>paper and cardboard</i>
articles used for packaging shirts and the like e.g. clips and pins (made from plastic or metal)	<i>plastics and metals</i>
asbestos	<i>disposal only by authorised operatives</i>
ash	<i>dry, non-recyclables</i>
ashtray (glass)	<i>glass</i>
ashtrays (ceramic or terracotta)	<i>dry, non-recyclables</i>
audio and video cassettes	<i>dry, non-recyclables</i>
audio cassettes	<i>dry, non-recyclables</i>
audio recorders	<i>refuse tip or bulky item collection</i>
babies' bottles	<i>plastic and metals</i>
baby walkers	<i>refuse tip or bulky item collection</i>
backing films for self-adhesive labels	<i>plastic and metals</i>
backpacks	<i>dry, non-recyclables</i>
bags (big)	<i>refuse tip or bulky item collection</i>
bags (canvas)	<i>dry, non-recyclables</i>
bags (leather)	<i>dry, non-recyclables</i>
bags (made from plastic)	<i>plastic and metals</i>
bags for clothing	<i>plastic and metals</i>
bags for coins	<i>plastic and metals</i>
bags for detergents	<i>plastic and metals</i>
bags for duvets or bed coverings, carpets, tablecloths and sheets etc.	<i>plastic and metals</i>
bags for foodstuffs such as rice or pasta	<i>plastic and metals</i>

**B**

bags for gardening materials	<i>plastic and metals</i>
bags in general (open mouth, with a valve)	<i>plastic and metals</i>
balls (toys and games)	<i>dry, non-recyclables</i>
bandages used as dressings	<i>dry, non-recyclables</i>
bath tubs	<i>refuse tip or bulky item collection</i>
bathroom furniture	<i>refuse tip or bulky item collection</i>
bathroom scales	<i>refuse tip or bulky item collection</i>
batteries (electric)	<i>special battery disposal unit</i>
battery charger	<i>refuse tip or bulky item collection</i>
bed frames (slatted)	<i>refuse tip or bulky item collection</i>
bed sheets	<i>refuse tip or bulky item collection</i>
belts and straps made from plastic, material or leather	<i>dry, non-recyclables</i>
benches made from wood, plastic or iron	<i>refuse tip or bulky item collection</i>
beverage cans	<i>plastic and metals</i>
beverage cartons	<i>paper and cardboard</i>
bicycles	<i>refuse tip or bulky item collection</i>
bike carriers	<i>refuse tip or bulky item collection</i>
billiard balls	<i>refuse tip or bulky item collection</i>
bird cages / aviaries	<i>refuse tip or bulky item collection</i>
biscuit wrappers if made from paper and aluminium	<i>dry, non-recyclables</i>
black boards	<i>refuse tip or bulky item collection</i>
blankets (electric)	<i>refuse tip or bulky item collection</i>
blankets (worn)	<i>refuse tip or bulky item collection</i>
bleach (empty container)	<i>plastic and metals</i>
blender	<i>refuse tip or bulky item collection</i>

**B-C**

<b>blinds</b>	<i>refuse tip or bulky item collection</i>
<b>boards</b>	<i>refuse tip or bulky item collection</i>
<b>body care products (empty containers)</b>	<i>plastic and metals</i>
<b>bolts</b>	<i>plastic and metals</i>
<b>bones - food scraps</b>	<i>home compost or food waste collection</i>
<b>booklets and pamphlets</b>	<i>paper and cardboard</i>
<b>books</b>	<i>paper and cardboard</i>
<b>bookshelves</b>	<i>refuse tip or bulky item collection</i>
<b>bottle racks</b>	<i>refuse tip or bulky item collection</i>
<b>bottles for detergents and cleaning products made from plastic (empty containers)</b>	<i>plastic and metals</i>
<b>bottles for water, oils, juices etc. (made from plastic)</b>	<i>plastic and metals</i>
<b>bottles made from glass</b>	<i>glass</i>
<b>bowls (plastic)</b>	<i>dry, non-recyclables</i>
<b>boxes of various sizes</b>	<i>paper and cardboard</i>
<b>bread (spoiled or out of date)</b>	<i>home compost or food waste collection</i>
<b>bricks (in quantities as specified by the urban sanitation regulations)</b>	<i>refuse tip or bulky item collection</i>
<b>bricks (in quantities as specified by the urban sanitation regulations)</b>	<i>refuse tip or bulky item collection</i>
<b>brooms (electric)</b>	<i>refuse tip or bulky item collection</i>
<b>brooms (traditional)</b>	<i>refuse tip or bulky item collection</i>
<b>brushes</b>	<i>dry, non-recyclables</i>
<b>bubble packaging (made from plastic)</b>	<i>plastic and metals</i>
<b>bubble wrap and the like</b>	<i>plastic and metals</i>
<b>buckets and pails</b>	<i>plastic and metals</i>
<b>buttons</b>	<i>dry, non-recyclables</i>
<b>cages for pets</b>	<i>refuse tip or bulky item collection</i>

## C

calendars	<i>paper and cardboard</i>
camcorders	<i>refuse tip or bulky item collection</i>
cameras	<i>refuse tip or bulky item collection</i>
candles and candle wax	<i>dry, non-recyclables</i>
candy and candy boxes (in cardboard)	<i>paper and cardboard</i>
candy and candy boxes (in plastic)	<i>plastic and metals</i>
canned goods (empty containers)	<i>plastic and metals</i>
cans made from steel, aluminium or plastic	<i>plastic and metals</i>
caps, lids and closures (made from metal)	<i>plastic and metals</i>
caps, stoppers, lids and closures (made from plastic)	<i>plastic and metals</i>
capsules for beverage dispensers (emptied automatically or manually after use)	<i>plastic and metals</i>
capsules for cans	<i>plastic and metals</i>
capsules for coffee, teas etc with a casing in biodegradable material	<i>home compost or food waste collection</i>
car seats for children	<i>refuse tip or bulky item collection</i>
carafes made from glass (and their various parts)	<i>glass</i>
carafes made from plastic	<i>plastic and metals</i>
carafes made from pyrex (and their various parts)	<i>dry, non-recyclables</i>
carafes made from terracotta	<i>dry, non-recyclables</i>
cardboard	<i>paper and cardboard</i>
cardboard boxes (for items such as toothpaste, medicines, cosmetics and the like)	<i>paper and cardboard</i>
cards (plastic coated)	<i>dry, non-recyclables</i>
cartons for packaging	<i>paper and cardboard</i>
cases for CDs, DVDs, audio cassettes and video cassettes	<i>plastic and metals</i>
casings for CDs video cassettes and audio cassettes	<i>plastic and metals</i>
CD / DVD players	<i>refuse tip or bulky item collection</i>

## C

CD racks	<i>plastic and metals</i>
CDs	<i>dry, non-recyclables</i>
cellophane	<i>plastic and metals</i>
cellulose tissues dirtied with organic material	<i>home compost or food waste collection</i>
ceramic cups and cups and their pieces	<i>dry, non-recyclables</i>
ceramic tiles (in quantities as specified by the urban sanitation regulations)	<i>refuse tip or bulky item collection</i>
ceramics (whole or pieces in quantities as specified by the urban sanitation regulations)	<i>dry, non-recyclables</i>
chairs	<i>refuse tip or bulky item collection</i>
chalks	<i>dry, non-recyclables</i>
chandeliers / lamps	<i>refuse tip or bulky item collection</i>
changing tables	<i>refuse tip or bulky item collection</i>
chests	<i>refuse tip or bulky item collection</i>
chests of drawers	<i>refuse tip or bulky item collection</i>
chewing gum	<i>dry, non-recyclables</i>
childrens' modelling clay	<i>dry, non-recyclables</i>
chipboard - sheets or pieces	<i>refuse tip or bulky item collection</i>
christmas decorations	<i>refuse tip or bulky item collection</i>
Christmas trees (real)	<i>refuse tip or bulky item collection</i>
Christmas trees (synthetic )	<i>refuse tip or bulky item collection</i>
cigarette butts	<i>dry, non-recyclables</i>
cigarette lighters	<i>dry, non-recyclables</i>
cigarette packets	<i>paper and cardboard</i>
cigarettes	<i>dry, non-recyclables</i>
clippings and garden waste (large quantities)	<i>refuse tip or bulky item collection</i>
clippings and garden waste (small quantities)	<i>home compost or food waste collection</i>



## C

clogs	<i>dry, non-recyclables</i>
closures of cans and bottles made from metal	<i>plastic and metals</i>
clothes (used or worn)	<i>refuse tip or bulky item collection</i>
clothes hangers (sold with a garment)	<i>plastic and metals</i>
clothes pegs (metal )	<i>refuse tip or bulky item collection</i>
clothes pegs (plastic)	<i>dry, non-recyclables</i>
clothes pegs (wooden)	<i>refuse tip or bulky item collection</i>
coal (used)	<i>dry, non-recyclables</i>
coated paper	<i>paper and cardboard</i>
coffee capsules made from paper	<i>home compost or food waste collection</i>
coffee capsules made from plastic	<i>dry, non-recyclables</i>
coffee grounds	<i>home compost or food waste collection</i>
coffee machines	<i>refuse tip or bulky item collection</i>
coils for electric cables	<i>refuse tip or bulky item collection</i>
colander (metal or plastic)	<i>plastic and metals</i>
combs (plastic)	<i>dry, non-recyclables</i>
combs (wooden)	<i>home compost or food waste collection</i>
computer disks	<i>dry, non-recyclables</i>
computer keyboard	<i>refuse tip or bulky item collection</i>
computer monitor	<i>refuse tip or bulky item collection</i>
computer mouse	<i>refuse tip or bulky item collection</i>
computers	<i>refuse tip or bulky item collection</i>
computers (tablet)	<i>refuse tip or bulky item collection</i>
conditioners	<i>refuse tip or bulky item collection</i>
condoms	<i>dry, non-recyclables</i>

## C

<b>contact lenses</b>	<i>dry, non-recyclables</i>
<b>containers for domestic use solvents</b>	<i>plastic and metals</i>
<b>containers made from glass for physiology solutions</b>	<i>glass</i>
<b>containers of deodorants for dishwashers and similar items</b>	<i>plastic and metals</i>
<b>containers, boxes and cans (open top)</b>	<i>plastic and metals</i>
<b>convector heaters (in quantities as specified by the urban sanitation regulations)</b>	<i>refuse tip or bulky item collection</i>
<b>cookies (spoiled or out of date)</b>	<i>home compost or food waste collection</i>
<b>cool bags for frozen foods</b>	<i>plastic and metals</i>
<b>copy paper</b>	<i>dry, non-recyclables</i>
<b>cores (from apples and the like)</b>	<i>home compost or food waste collection</i>
<b>cork (pure)</b>	<i>home compost or food waste collection</i>
<b>cork stoppers</b>	<i>home compost or food waste collection</i>
<b>corkscrews</b>	<i>dry, non-recyclables</i>
<b>correction fluid</b>	<i>dry, non-recyclables</i>
<b>corrugated cardboard</b>	<i>paper and cardboard</i>
<b>corrugated roofing panels or pieces</b>	<i>disposal only by authorised operatives</i>
<b>cosmetic case / powder compact / lipstick holder</b>	<i>plastic and metals</i>
<b>cosmetics (full container)</b>	<i>dry, non-recyclables</i>
<b>cosmetics and perfume bottles made from glass</b>	<i>glass</i>
<b>cosmetics and perfume bottles made from plastic or metal</b>	<i>plastic and metals</i>
<b>costume jewellery</b>	<i>dry, non-recyclables</i>
<b>cotton earbuds</b>	<i>dry, non-recyclables</i>
<b>cotton spools (paper)</b>	<i>paper and cardboard</i>
<b>cotton spools (plastic)</b>	<i>plastic and metals</i>
<b>cotton wadding</b>	<i>home compost or food waste collection</i>

**C-D**

counter tops for kitchens	<i>refuse tip or bulky item collection</i>
covers for domestic vehicles	<i>refuse tip or bulky item collection</i>
covers for palletts such as netting and film	<i>plastic and metals</i>
crates for fruits, vegetables and meats (paper )	<i>refuse tip or bulky item collection</i>
crates for fruits, vegetables and meats (plastic )	<i>refuse tip or bulky item collection</i>
crates, boxes / bins, cages	<i>refuse tip or bulky item collection</i>
crepe paper	<i>paper and cardboard</i>
cribs	<i>refuse tip or bulky item collection</i>
crockery (broken)	<i>dry, non-recyclables</i>
crystal glasses	<i>dry, non-recyclables</i>
crystals	<i>dry, non-recyclables</i>
cupboards (metal )	<i>refuse tip or bulky item collection</i>
curtains (made from fabric)	<i>refuse tip or bulky item collection</i>
cutlery (metal)	<i>plastic and metals</i>
cutlery (plastic)	<i>dry, non-recyclables</i>
cutters	<i>refuse tip or bulky item collection</i>
cutting boards (plastic )	<i>plastic and metals</i>
cutting boards (wooden)	<i>refuse tip or bulky item collection</i>
deckchairs	<i>refuse tip or bulky item collection</i>
dehumidifiers	<i>refuse tip or bulky item collection</i>
demijohns	<i>refuse tip or bulky item collection</i>
denatured alcohol (in an empty container)	<i>plastics and metals</i>
dental floss	<i>dry, non-recyclables</i>
deodorants with glass container (empty container)	<i>glass</i>
deodorants with plastic container (empty containers)	<i>plastic and metals</i>

**D**

depilatory strips	<i>dry, non-recyclables</i>
depilatory wax (empty container)	<i>plastic and metals</i>
desks	<i>refuse tip or bulky item collection</i>
detergent (empty paper container)	<i>paper and cardboard</i>
detergent (empty plastic container)	<i>plastic and metals</i>
detergent dispenser (empty container)	<i>plastic and metals</i>
dialysis and ostomy bags	<i>dry, non-recyclables</i>
diapers / incontinence products (for adults)	<i>dry, non-recyclables</i>
diapers / nappies (for children)	<i>dry, non-recyclables</i>
digital pressure gauges	<i>refuse tip or bulky item collection</i>
digital thermometers	<i>refuse tip or bulky item collection</i>
dishcloths	<i>dry, non-recyclables</i>
dishwashers	<i>refuse tip or bulky item collection</i>
disinfectant (empty container)	<i>plastic and metals</i>
dispensers	<i>plastic and metals</i>
disposable 'flipper' cigarette lighters	<i>refuse tip or bulky item collection</i>
disposable ice cream spoons	<i>dry, non-recyclables</i>
DIY tools	<i>refuse tip or bulky item collection</i>
dolls	<i>dry, non-recyclables</i>
domestic appliances	<i>refuse tip or bulky item collection</i>
doormats	<i>dry, non-recyclables</i>
doors (external or internal)	<i>refuse tip or bulky item collection</i>
doors (various including cabinet doors)	<i>refuse tip or bulky item collection</i>
drawing paper (glossy)	<i>dry, non-recyclables</i>
drawing tools (rulers, protractors etc)	<i>dry, non-recyclables</i>

**D-E**

dried fruit shells / skins	<i>home compost or food waste collection</i>
drinking straws	<i>dry, non-recyclables</i>
drinks cartons (empty containers)	<i>paper and cardboard</i>
droppers	<i>plastic and metals</i>
drums (empty) made from metal	<i>refuse tip or bulky item collection</i>
drums (empty) made from plastic	<i>refuse tip or bulky item collection</i>
drying racks	<i>refuse tip or bulky item collection</i>
dust collected from floor cleaning	<i>dry, non-recyclables</i>
dust from the vacuum cleaner	<i>dry, non-recyclables</i>
dustpans	<i>dry, non-recyclables</i>
DVD cases	<i>plastic and metals</i>
DVDs	<i>dry, non-recyclables</i>
dye for clothes or shoes (empty container)	<i>plastic and metals</i>
dye for hair (empty container)	<i>plastic and metals</i>
dyes (liquids or creams in empty containers)	<i>plastic and metals</i>
egg shells	<i>home compost or food waste collection</i>
egg trays (made from plastic)	<i>plastic and metals</i>
eggs (rotten or out of date)	<i>home compost or food waste collection</i>
electric boilers	<i>refuse tip or bulky item collection</i>
electric cookers	<i>refuse tip or bulky item collection</i>
electric grater	<i>refuse tip or bulky item collection</i>
electric grills	<i>refuse tip or bulky item collection</i>
electric heaters	<i>refuse tip or bulky item collection</i>
electric irons / waffle makers	<i>refuse tip or bulky item collection</i>
electric warmers	<i>refuse tip or bulky item collection</i>

**E-F**

electrical cables (in quantities as specified by the urban sanitation regulations)	<i>refuse tip or bulky item collection</i>
electrical wires (in quantities as specified by the urban sanitation regulations)	<i>refuse tip or bulky item collection</i>
electronic calculators	<i>refuse tip or bulky item collection</i>
electronic devices (TV, PC etc)	<i>refuse tip or bulky item collection</i>
electronic lights	<i>special disposal units for lights, refuse tip or bulky item collection</i>
electronic scales	<i>refuse tip or bulky item collection</i>
electrostatic dust cloths	<i>dry, non-recyclables</i>
enamels for painting (empty container)	<i>refuse tip or bulky item collection</i>
energy saving light bulbs	<i>refuse tip or bulky item collection</i>
envelopes for sending catalogues and magazines (made from plastic)	<i>plastic and metals</i>
envelopes made from nylon	<i>refuse tip or bulky item collection</i>
envelopes made from paper	<i>home compost or food waste collection</i>
erasers / rubbers	<i>dry, non-recyclables</i>
Eternit' building material	<i>disposal only by authorised operatives</i>
excrement from pets	<i>dry, non-recyclables</i>
exercise bicycles	<i>refuse tip or bulky item collection</i>
expanded polystyrene bars for packaging	<i>plastic and metals</i>
fabric pieces	<i>refuse tip or bulky item collection</i>
false teeth	<i>dry, non-recyclables</i>
fans	<i>refuse tip or bulky item collection</i>
fats (animal - expired or out of date)	<i>home compost or food waste collection</i>
fats (vegetable - expired or out of date)	<i>home compost or food waste collection</i>
fax machines	<i>refuse tip or bulky item collection</i>
felt pads	<i>dry, non-recyclables</i>
fencing (metal)	<i>refuse tip or bulky item collection</i>

## F

film (on rolls)	<i>dry, non-recyclables</i>
film (protective)	<i>plastic and metals</i>
film (single layer or multi-layer)	<i>plastic and metals</i>
film (stretchy) for wrapping pallets and other uses	<i>plastic and metals</i>
film for clothes washed in laundries (made from plastic)	<i>plastic and metals</i>
film for food (made from plastic)	<i>plastic and metals</i>
film for retail use (transparent plastic)	<i>plastic and metals</i>
filters for coffee and teas if wrapped in compostable material	<i>home compost or food waste collection</i>
finger nails and toe nails	<i>dry, non-recyclables</i>
fire extinguishers	<i>authorised retailers</i>
fireguards	<i>refuse tip or bulky item collection</i>
fish (spoiled or out of date)	<i>home compost or food waste collection</i>
fish bones	<i>home compost or food waste collection</i>
fishing rods	<i>refuse tip or bulky item collection</i>
flashlights (without batteries)	<i>refuse tip or bulky item collection</i>
floor polishers	<i>refuse tip or bulky item collection</i>
floppy disks	<i>dry, non-recyclables</i>
flowers (artificial)	<i>dry, non-recyclables</i>
flowers (cut or dried)	<i>home compost or food waste collection</i>
flyers and brochures	<i>paper and cardboard</i>
foam rubber	<i>dry, non-recyclables</i>
folding stairs	<i>refuse tip or bulky item collection</i>
food (left-over )	<i>home compost or food waste collection</i>
food dispenser (empty container)	<i>plastic and metals</i>
food mixer	<i>refuse tip or bulky item collection</i>

**F-G**

<b>foods (spoiled or out of date)</b>	<i>home compost or food waste collection</i>
<b>footwear (worn)</b>	<i>dry, non-recyclables</i>
<b>freezer bags</b>	<i>plastic and metals</i>
<b>freezers</b>	<i>refuse tip or bulky item collection</i>
<b>fridges (portable)</b>	<i>refuse tip or bulky item collection</i>
<b>fridges (standard sizes)</b>	<i>refuse tip or bulky item collection</i>
<b>fruit (dried - spoiled or out of date)</b>	<i>home compost or food waste collection</i>
<b>fruit (rotten)</b>	<i>home compost or food waste collection</i>
<b>fruit and vegetable peelings</b>	<i>home compost or food waste collection</i>
<b>fruit stones, seeds and pips</b>	<i>home compost or food waste collection</i>
<b>fryers</b>	<i>refuse tip or bulky item collection</i>
<b>furniture (rattan)</b>	<i>refuse tip or bulky item collection</i>
<b>furniture (wicker)</b>	<i>refuse tip or bulky item collection</i>
<b>furniture drawers</b>	<i>refuse tip or bulky item collection</i>
<b>furniture in general</b>	<i>refuse tip or bulky item collection</i>
<b>gardening equipment</b>	<i>refuse tip or bulky item collection</i>
<b>gas boilers</b>	<i>refuse tip or bulky item collection</i>
<b>gas containers (various types - refillable)</b>	<i>refuse tip or bulky item collection</i>
<b>gas cookers</b>	<i>refuse tip or bulky item collection</i>
<b>gas heaters</b>	<i>refuse tip or bulky item collection</i>
<b>gas lighters</b>	<i>refuse tip or bulky item collection</i>
<b>gates made from metal</b>	<i>refuse tip or bulky item collection</i>
<b>gates made from wood</b>	<i>refuse tip or bulky item collection</i>
<b>gauze dressings</b>	<i>dry, non-recyclables</i>
<b>gazebos</b>	<i>refuse tip or bulky item collection</i>



## G-H

gift boxes for sweets or candy (crystal or ceramic)	<i>dry, non-recyclables</i>
glass (frosted)	<i>glass</i>
glass (opalised)	<i>glass</i>
glass bottles	<i>glass</i>
glass bottles for injectable solutions	<i>glass</i>
glass from window frames (whole or in pieces)	<i>refuse tip or bulky item collection</i>
glass marbles	<i>glass</i>
glass phials (empty container)	<i>glass</i>
glass sheets or fragments	<i>refuse tip or bulky item collection</i>
glasses / beakers (made from compostable material)	<i>home compost or food waste collection</i>
glasses / beakers (made from glass)	<i>glass</i>
glasses / beakers (made from plastic)	<i>plastic and metals</i>
glasses frames	<i>dry, non-recyclables</i>
glasses lenses	<i>dry, non-recyclables</i>
glue sticks	<i>dry, non-recyclables</i>
grass (in quantities as specified by the urban sanitation regulations)	<i>home compost or food waste collection</i>
grass cuttings (in large quantities and therefore over the limit as specified by the urban sanitation regulations)	<i>refuse tip or bulky item collection</i>
grass cuttings (in small quantities)	<i>home compost or food waste collection</i>
grates / grills for grilling	<i>refuse tip or bulky item collection</i>
greased paper	<i>home compost or food waste collection</i>
guttering (in quantities as specified by the urban sanitation regulations)	<i>refuse tip or bulky item collection</i>
gutters and downpipes (in quantities as specified by the urban sanitation regulations)	<i>refuse tip or bulky item collection</i>
hair	<i>dry, non-recyclables</i>
hair brushes	<i>dry, non-recyclables</i>
hair dryers	<i>refuse tip or bulky item collection</i>

**H-I**

hair straighteners	<i>refuse tip or bulky item collection</i>
hairdriers (electric )	<i>refuse tip or bulky item collection</i>
hairspray (empty container)	<i>plastic and metals</i>
halogen bulbs	<i>refuse tip or bulky item collection</i>
hammocks	<i>refuse tip or bulky item collection</i>
handbags for objects	<i>plastic and metals</i>
handrails, gratings etc (made from iron and wood)	<i>refuse tip or bulky item collection</i>
hangers for shoes, scarves, socks, ties, bags and similar items	<i>plastics and metals</i>
hanging objects	<i>refuse tip or bulky item collection</i>
hats (worn)	<i>dry, non-recyclables</i>
headboards for beds	<i>refuse tip or bulky item collection</i>
heat-resistant dishes	<i>dry, non-recyclables</i>
high chairs	<i>refuse tip or bulky item collection</i>
highlighters	<i>dry, non-recyclables</i>
hobs (gas or electric)	<i>refuse tip or bulky item collection</i>
hot water bottles	<i>dry, non-recyclables</i>
houseplants (dried out)	<i>home compost or food waste collection</i>
hub caps (as specified by the urban sanitation regulations)	<i>refuse tip or bulky item collection</i>
hygiene mats for dogs or cats	<i>dry, non-recyclables</i>
ice cream cups made from paper (empty container)	<i>paper and cardboard</i>
ice cream cups made from plastic (empty container)	<i>plastic and metals</i>
incandescent bulbs	<i>dry, non-recyclables</i>
incense	<i>home compost or food waste collection</i>
insecticide (empty container)	<i>plastic and metals</i>
iron strips / sections (in quantities as specified by the urban sanitation regulations)	<i>refuse tip or bulky item collection</i>

**I-J-K-L**

iron wire hangers and related accessories	<i>plastics and metals</i>
ironing boards	<i>refuse tip or bulky item collection</i>
irons	<i>refuse tip or bulky item collection</i>
irrigation rods	<i>refuse tip or bulky item collection</i>
jackets (worn)	<i>refuse tip or bulky item collection</i>
jars (glass )	<i>glass</i>
jars for powdered foods	<i>plastics and metals</i>
jerry cans in metal or plastic (over 5 litres)	<i>refuse tip or bulky item collection</i>
jerry cans in metal or plastic (up to 5 litres)	<i>plastic and metals</i>
jugs and pitchers made from plastic	<i>plastic and metals</i>
jugs pitchers made from glass	<i>glass</i>
kennels for pets	<i>refuse tip or bulky item collection</i>
kerosene or parafin heaters	<i>refuse tip or bulky item collection</i>
keys made from metal	<i>plastic and metals</i>
kitchen carts	<i>refuse tip or bulky item collection</i>
kitchen food processors	<i>refuse tip or bulky item collection</i>
kitchen gas cylinders (empty container)	<i>refuse tip or bulky item collection</i>
kitchen paper soaked with chemicals	<i>dry, non-recyclables</i>
kitchen paper soaked with organic substances	<i>home compost or food waste collection</i>
kitchen paper with organic residues	<i>home compost or food waste collection</i>
kitchen scales	<i>refuse tip or bulky item collection</i>
kitchen scraps	<i>home compost or food waste collection</i>
labels (made from plastic)	<i>plastic and metals</i>
lace doilies for cakes	<i>plastic and metals</i>
leaflets	<i>paper and cardboard</i>

**L-M**

leather goods	<i>refuse tip or bulky item collection</i>
leather scraps	<i>dry, non-recyclables</i>
leaves (in quantities as specified by the urban sanitation regulations)	<i>home compost or food waste collection</i>
LED bulbs	<i>refuse tip or bulky item collection</i>
lights (ceiling)	<i>refuse tip or bulky item collection</i>
litter for pets (compostable)	<i>home compost or food waste collection</i>
litter for pets (non compostable)	<i>dry, non-recyclables</i>
lollipop sticks	<i>plastic and metals</i>
loudspeakers	<i>refuse tip or bulky item collection</i>
lozenges / pastilles (spoiled or out of date)	<i>special disposal units for medicines</i>
magazines	<i>paper and cardboard</i>
make-up removal pads	<i>dry, non-recyclables</i>
marker pens	<i>dry, non-recyclables</i>
mascara wand (if part of the lid of the product)	<i>plastic and metals</i>
match boxes	<i>paper and cardboard</i>
matches (used)	<i>dry, non-recyclables</i>
mattresses	<i>refuse tip or bulky item collection</i>
meat (spoiled)	<i>home compost or food waste collection</i>
mechanical scales	<i>refuse tip or bulky item collection</i>
medicines (expired / out of date)	<i>special disposal units for medicines</i>
medicines (expired or out of date)	<i>special disposal unit for medicines</i>
mercury pressure meters	<i>refuse tip or bulky item collection</i>
mercury thermometers	<i>refuse tip or bulky item collection</i>
metal bed frames	<i>refuse tip or bulky item collection</i>
metal hinges made from metal	<i>plastic and metals</i>

**M-N**

metal structures (of gazebos, curtains, etc.)	<i>refuse tip or bulky item collection</i>
metal wire coated with plastic	<i>dry, non-recyclables</i>
microwave ovens	<i>refuse tip or bulky item collection</i>
mirrored items	<i>refuse tip or bulky item collection</i>
mirrors (large )	<i>refuse tip or bulky item collection</i>
mirrors (small)	<i>dry, non-recyclables</i>
mobile phone batteries	<i>special battery disposal unit</i>
mobile phone covers	<i>dry, non-recyclables</i>
mobile phones	<i>refuse tip or bulky item collection</i>
modelling clay	<i>dry, non-recyclables</i>
mosquito nets	<i>refuse tip or bulky item collection</i>
mosquito tabs	<i>dry, non-recyclables</i>
motor vehicle batteries	<i>refuse tip or bulky item collection</i>
motor vehicles and their parts	<i>authorised vehicle recycling centre</i>
motorcycle helmets	<i>refuse tip or bulky item collection</i>
multi-layered materials	<i>refuse tip or bulky item collection</i>
music cassettes	<i>dry, non-recyclables</i>
musical instruments	<i>refuse tip or bulky item collection</i>
mussel (and mussel shells)	<i>home compost or food waste collection</i>
nails (metal)	<i>plastic and metals</i>
needles (with protective hood)	<i>dry, non-recyclables</i>
neon (tubes and lamps)	<i>refuse tip or bulky item collection</i>
nets for mosquito screens	<i>refuse tip or bulky item collection</i>
netting for fruits and vegetables	<i>plastic and metals</i>
newspapers (clean)	<i>paper and cardboard</i>

**N-O-P**

newspapers (dirty)	<i>paper and cardboard</i>
newspapers dirty with organic material (e.g. animal excrement)	<i>dry, non-recyclables</i>
non-rechargeable mechanical grinders	<i>plastic and metals</i>
notebooks	<i>paper and cardboard</i>
nylon items	<i>dry, non-recyclables</i>
nylon stockings	<i>dry, non-recyclables</i>
octabins	<i>refuse tip or bulky item collection</i>
outdoor furniture	<i>refuse tip or bulky item collection</i>
oven paper	<i>dry, non-recyclables</i>
ovens (electrical)	<i>refuse tip or bulky item collection</i>
ovens (for wood)	<i>refuse tip or bulky item collection</i>
ovens (gas)	<i>refuse tip or bulky item collection</i>
pacifiers, soothers and dummies	<i>dry, non-recyclables</i>
packaging (metal)	<i>plastic and metals</i>
packaging (paper and cardboard)	<i>paper and cardboard</i>
packaging (plastic)	<i>plastic and metals</i>
packaging for shoe polish (empty metal container)	<i>plastic and metals</i>
packaging for shoe polish (empty plastic container)	<i>plastic and metals</i>
packaging made from rigid or flexible plastic	<i>plastic and metals</i>
packing paper	<i>paper and cardboard</i>
padded envelopes	<i>dry, non-recyclables</i>
paint (empty container)	<i>refuse tip or bulky item collection</i>
paint (full container)	<i>disposal only by authorised operatives</i>
paint for walls (empty container)	<i>plastic and metals</i>
paintings	<i>refuse tip or bulky item collection</i>

**P**

pallets (plastic )	<i>refuse tip or bulky item collection</i>
pallets (wooden)	<i>refuse tip or bulky item collection</i>
paper clips and staples (when part of the packaging)	<i>plastic and metals</i>
paper diaries	<i>paper and cardboard</i>
paper dirtied with cleaning products or sanitiser	<i>dry, non-recyclables</i>
paper disks for pots and pans	<i>paper and cardboard</i>
paper envelopes for sending catalogues and magazines	<i>paper and cardboard</i>
paper envelopes with a plastic window	<i>paper and cardboard</i>
paper for wrapping meats or cheeses	<i>dry, non-recyclables</i>
paper labels	<i>paper and cardboard</i>
paper napkins soiled with organic material	<i>home compost or food waste collection</i>
paper printouts	<i>paper and cardboard</i>
paper soiled with glue or other substances	<i>dry, non-recyclables</i>
paper trays for eggs	<i>paper and cardboard</i>
parchment	<i>paper and cardboard</i>
pasta (spoiled or out of date)	<i>home compost or food waste collection</i>
pasta machines	<i>refuse tip or bulky item collection</i>
pellet heaters	<i>refuse tip or bulky item collection</i>
pencils and coloured pencils	<i>dry, non-recyclables</i>
perfume or cosmetic samples	<i>dry, non-recyclables</i>
pesticides - for domestic use (in an empty container)	<i>plastics and metals</i>
pesticides (100% clean, empty containers)	<i>plastic and metals</i>
pet litter sand (compostable)	<i>home compost or food waste collection</i>
pet litter sand (non-compostable)	<i>dry, non-recyclables</i>
phials for medicines (full)	<i>special disposal units for medicines</i>

**P**

phials made from glass (empty)	<i>glass</i>
phials made from plastic (empty)	<i>plastic and metals</i>
photo paper	<i>dry, non-recyclables</i>
photocopiers	<i>refuse tip or bulky item collection</i>
photocopies	<i>paper and cardboard</i>
photographic film	<i>dry, non-recyclables</i>
photographic negatives	<i>dry, non-recyclables</i>
photographic slides	<i>dry, non-recyclables</i>
photos	<i>dry, non-recyclables</i>
pillow cases / covers	<i>refuse tip or bulky item collection</i>
pillows and cushions	<i>refuse tip or bulky item collection</i>
pills (expired or out of date)	<i>special disposal units for medicines</i>
ping pong tables	<i>refuse tip or bulky item collection</i>
pipes for wood burners or flues	<i>refuse tip or bulky item collection</i>
pizza boxes (cardboard, if clean)	<i>paper and cardboard</i>
pizza boxes (cardboard, with organic residue)	<i>home compost or food waste collection</i>
plasterboard (in quantities as specified by the urban sanitation regulations)	<i>refuse tip or bulky item collection</i>
plasters / band-aids	<i>dry, non-recyclables</i>
plasterwork	<i>refuse tip or bulky item collection</i>
plates (ceramic - whole or in pieces)	<i>dry, non-recyclables</i>
plates (plastic)	<i>plastic and metals</i>
platforms (made from plastic)	<i>refuse tip or bulky item collection</i>
playpens for children	<i>refuse tip or bulky item collection</i>
plectrums and picks	<i>dry, non-recyclables</i>
plexiglass	<i>dry, non-recyclables</i>



## P

plywood	<i>refuse tip or bulky item collection</i>
poles for curtains	<i>refuse tip or bulky item collection</i>
polystyrene sheets for packing	<i>plastic and metals</i>
polystyrene (food trays)	<i>plastic and metals</i>
polystyrene (from inside large cardboard packaging)	<i>plastic and metals</i>
polystyrene packaging	<i>plastic and metals</i>
polystyrene trays (made from plastic)	<i>plastic and metals</i>
porcelain (whole or fragments)	<i>dry, non-recyclables</i>
post-its	<i>paper and cardboard</i>
postcards	<i>paper and cardboard</i>
pots	<i>refuse tip or bulky item collection</i>
pots (small plastic )	<i>plastic and metals</i>
pots and trays (plastic )	<i>plastics and metals</i>
pots for wet wipes (made from plastic )	<i>plastics and metals</i>
pots made from aluminium (empty)	<i>plastics and metals</i>
prams	<i>refuse tip or bulky item collection</i>
printer cartridges	<i>refuse tip or bulky item collection</i>
printers	<i>refuse tip or bulky item collection</i>
protective packaging such as corners and the like	<i>plastic and metals</i>
protective sheeting in aluminium or plastic	<i>plastic and metals</i>
protractors	<i>dry, non-recyclables</i>
pumps and measuring cups used for detergents	<i>plastic and metals</i>
purses	<i>dry, non-recyclables</i>
PVC pipes for hydraulic use	<i>refuse tip or bulky item collection</i>
pyrex	<i>dry, non-recyclables</i>

## R

<b>radiators (electric)</b>	<i>refuse tip or bulky item collection</i>
<b>radiators (in quantities as specified by the urban sanitation regulations)</b>	<i>refuse tip or bulky item collection</i>
<b>radios</b>	<i>refuse tip or bulky item collection</i>
<b>rafia</b>	<i>home compost or food waste collection</i>
<b>rags</b>	<i>dry, non-recyclables</i>
<b>rakes</b>	<i>refuse tip or bulky item collection</i>
<b>razor blades (suitably protected)</b>	<i>dry, non-recyclables</i>
<b>razors (disposable)</b>	<i>dry, non-recyclables</i>
<b>razors (electric)</b>	<i>refuse tip or bulky item collection</i>
<b>reflective vests (no longer usable)</b>	<i>dry, non-recyclables</i>
<b>reusable 'cabas' type bags</b>	<i>plastic and metals</i>
<b>ribbons for gifts</b>	<i>dry, non-recyclables</i>
<b>rice (spoiled or out of date)</b>	<i>home compost or food waste collection</i>
<b>roller skates</b>	<i>refuse tip or bulky item collection</i>
<b>rolls of aluminium foil</b>	<i>plastic and metals</i>
<b>rolls, tubes and cylinders for foil etc (made from paper)</b>	<i>paper and cardboard</i>
<b>rolls, tubes and cylinders for foil etc (made from plastic)</b>	<i>plastic and metals</i>
<b>rubber bands</b>	<i>dry, non-recyclables</i>
<b>rubber objects (large)</b>	<i>refuse tip or bulky item collection</i>
<b>rubber objects (small)</b>	<i>dry, non-recyclables</i>
<b>rubber or latex gloves</b>	<i>dry, non-recyclables</i>
<b>rubble (in quantities as specified by the urban sanitation regulations)</b>	<i>refuse tip or bulky item collection</i>
<b>rubble (in quantities greater than that specified by the urban sanitation regulations)</b>	<i>disposal only by authorised operatives</i>
<b>rugs</b>	<i>refuse tip or bulky item collection</i>
<b>rulers</b>	<i>dry, non-recyclables</i>

**R-S**

running machines / treadmills	<i>refuse tip or bulky item collection</i>
sandpaper	<i>dry, non-recyclables</i>
sandwich bags (made from paper)	<i>paper and cardboard</i>
sanitary ware - sinks, toilets, bidets, shower trays, etc. (in quantities as specified by the urban sanitation regulations)	<i>refuse tip or bulky item collection</i>
satellite dishes	<i>refuse tip or bulky item collection</i>
scanners	<i>refuse tip or bulky item collection</i>
scissors	<i>dry, non-recyclables</i>
scooters and scooter parts	<i>authorised vehicle recycling centre</i>
scratch cards	<i>dry, non-recyclables</i>
seed trays	<i>plastic and metals</i>
sewing machines	<i>refuse tip or bulky item collection</i>
shapes and molds (plastic)	<i>plastic and metals</i>
shavings from pencils or crayons	<i>dry, non-recyclables</i>
sheets of paper or card	<i>paper and cardboard</i>
shells and shellfish shells	<i>home compost or food waste collection</i>
shelving in wood, metal or plastic	<i>refuse tip or bulky item collection</i>
shoe brushes	<i>dry, non-recyclables</i>
shoe insoles	<i>dry, non-recyclables</i>
shoe polish	<i>dry, non-recyclables</i>
shoelaces	<i>dry, non-recyclables</i>
shoes and boots (unusable)	<i>dry, non-recyclables</i>
shop and parking receipts	<i>dry, non-recyclables</i>
shopping bags	<i>plastic and metals</i>
shopping carts	<i>refuse tip or bulky item collection</i>
shovels	<i>refuse tip or bulky item collection</i>

## S

shower cabins	<i>refuse tip or bulky item collection</i>
sinks	<i>refuse tip or bulky item collection</i>
ski boots	<i>refuse tip or bulky item collection</i>
ski poles	<i>refuse tip or bulky item collection</i>
skis	<i>refuse tip or bulky item collection</i>
skylights	<i>refuse tip or bulky item collection</i>
slippers	<i>dry, non-recyclables</i>
snack wrappers	<i>plastic and metals</i>
soap bars	<i>dry, non-recyclables</i>
socks / stockings (worn )	<i>dry, non-recyclables</i>
sofa beds	<i>refuse tip or bulky item collection</i>
sofas	<i>refuse tip or bulky item collection</i>
soft toys (large)	<i>refuse tip or bulky item collection</i>
soft toys (small)	<i>dry, non-recyclables</i>
soil for plants	<i>home compost or food waste collection</i>
soot	<i>dry, non-recyclables</i>
spectacle frames	<i>dry, non-recyclables</i>
spoiled pizza	<i>home compost or food waste collection</i>
sponges	<i>dry, non-recyclables</i>
sponges (abrasive )	<i>dry, non-recyclables</i>
spray cans (empty, labelled T or F)	<i>plastic and metals</i>
spray cans (empty, not labelled T or F)	<i>plastic and metals</i>
stamp pads	<i>dry, non-recyclables</i>
starchy foods (out of date or spoiled)	<i>home compost or food waste collection</i>
stationery pots	<i>plastics and metals</i>

**S-T**

steam cleaners	<i>refuse tip or bulky item collection</i>
sterile barrier systems (casings, trays and materials needed to maintain product sterility)	<i>plastic and metals</i>
sticky labels	<i>dry, non-recyclables</i>
storage units for shoes	<i>refuse tip or bulky item collection</i>
straps for tying packages	<i>plastic and metals</i>
straw	<i>home compost or food waste collection</i>
string or twine in synthetic material	<i>dry, non-recyclables</i>
string or twine made from natural fibres	<i>home compost or food waste collection</i>
strips of cardboard for pots and pans	<i>paper and cardboard</i>
strollers and pushchairs	<i>refuse tip or bulky item collection</i>
stylus batteries	<i>special battery disposal unit</i>
sun visors (car)	<i>dry, non-recyclables</i>
sunloungers	<i>refuse tip or bulky item collection</i>
sunscreen (empty container)	<i>plastic and metals</i>
supermarket trolley bags	<i>plastic and metals</i>
syringes with a protected needle	<i>dry, non-recyclables</i>
tablecloths (made from plastic)	<i>dry, non-recyclables</i>
tables	<i>refuse tip or bulky item collection</i>
tableware (disposable plastic)	<i>dry, non-recyclables</i>
talcum powder (in an empty cardboard or plastic container )	<i>paper and cardboard</i>
tampons and sanitary products	<i>dry, non-recyclables</i>
tanks for irrigation (made from plastic)	<i>refuse tip or bulky item collection</i>
tanks in plastic or steel for drinking water	<i>refuse tip or bulky item collection</i>
tanks or cisterns made from various materials	<i>refuse tip or bulky item collection</i>
tanning creams (empty container)	<i>plastic and metals</i>

## T

tapestry items	<i>dry, non-recyclables</i>
taps and accessories	<i>refuse tip or bulky item collection</i>
tar paper	<i>disposal only by authorised operatives</i>
telephone directories	<i>paper and cardboard</i>
telephones	<i>refuse tip or bulky item collection</i>
television antennas	<i>refuse tip or bulky item collection</i>
televisions	<i>refuse tip or bulky item collection</i>
tennis balls	<i>dry, non-recyclables</i>
tennis rackets	<i>refuse tip or bulky item collection</i>
terracotta	<i>dry, non-recyclables</i>
tetrapak containers	<i>paper and cardboard</i>
thermochemical paper (shop receipts)	<i>dry, non-recyclables</i>
thinner (plastic or empty metal container)	<i>plastic and metals</i>
tickets for buses, trains, planes, etc.	<i>paper and cardboard</i>
tier sheets	<i>plastic and metals</i>
ties (worn)	<i>dry, non-recyclables</i>
tiles (in quantities as specified by the urban sanitation regulations)	<i>refuse tip or bulky item collection</i>
tin	<i>plastic and metals</i>
tinfoil	<i>plastic and metals</i>
tinplate cans	<i>plastic and metals</i>
tissue paper	<i>paper and cardboard</i>
toasters	<i>refuse tip or bulky item collection</i>
toner (used cartridges)	<i>refuse tip or bulky item collection</i>
toolboxes	<i>refuse tip or bulky item collection</i>
toothbrushes (electric)	<i>refuse tip or bulky item collection</i>

**T-U**

toothbrushes (manual)	<i>dry, non-recyclables</i>
toothpaste (empty container)	<i>plastic and metals</i>
toy 'surprises' (plastic)	<i>plastic and metals</i>
toys without batteries (large)	<i>refuse tip or bulky item collection</i>
toys without batteries (small)	<i>dry, non-recyclables</i>
trays (made from cardboard)	<i>paper and cardboard</i>
trays (made from plastic)	<i>plastic and metals</i>
trichlorethylene (empty container)	<i>refuse tip or bulky item collection</i>
tricycles	<i>refuse tip or bulky item collection</i>
trimmings and decorations	<i>dry, non-recyclables</i>
trophies, cups and plaques	<i>refuse tip or bulky item collection</i>
trunks / suitcases	<i>refuse tip or bulky item collection</i>
tubes (neon)	<i>refuse tip or bulky item collection</i>
tubes (rubber)	<i>dry, non-recyclables</i>
tubes containing food products (empty container)	<i>plastic and metals</i>
tubes made from plastic or metal for creams (empty container)	<i>plastic and metals</i>
tulle	<i>dry, non-recyclables</i>
tumble driers	<i>refuse tip or bulky item collection</i>
Tupperware' type storage containers	<i>plastic and metals</i>
turpentine (in an empty container)	<i>plastics and metals</i>
twigs and vegetable residues (in quantities as specified by the urban sanitation regulations)	<i>refuse tip or bulky item collection</i>
twigs and vegetable residues (in small quantities)	<i>home compost or food waste collection</i>
tyres for vehicles (origin and in quantities as specified by the urban sanitation regulations)	<i>refuse tip or bulky item collection</i>
umbrellas (large)	<i>refuse tip or bulky item collection</i>
umbrellas (small)	<i>dry, non-recyclables</i>

**U-V-W**

<b>underwear (used or worn)</b>	<i>dry, non-recyclables</i>
<b>USB sticks</b>	<i>refuse tip or bulky item collection</i>
<b>used clothes in good condition</b>	<i>street bins for used clothing, refuse tip or bulky item collection</i>
<b>used vegetable oils (in closed containers)</b>	<i>refuse tip or bulky item collection</i>
<b>vacuum cleaner bags</b>	<i>dry, non-recyclables</i>
<b>vacuum cleaners</b>	<i>refuse tip or bulky item collection</i>
<b>vacuum packing machines</b>	<i>refuse tip or bulky item collection</i>
<b>vases made from ceramic and ceramic pieces</b>	<i>dry, non-recyclables</i>
<b>vases made from glass</b>	<i>glass</i>
<b>vases made from plastic, terracotta or other materials (large)</b>	<i>refuse tip or bulky item collection</i>
<b>vases made from terracotta and their pieces (small)</b>	<i>dry, non-recyclables</i>
<b>vegetables (spoiled)</b>	<i>home compost or food waste collection</i>
<b>vegetables and vegetable waste</b>	<i>home compost or food waste collection</i>
<b>venetian blinds (in quantities as specified by the urban sanitation regulations)</b>	<i>refuse tip or bulky item collection</i>
<b>video recorders</b>	<i>refuse tip or bulky item collection</i>
<b>videogames</b>	<i>refuse tip or bulky item collection</i>
<b>videotapes</b>	<i>dry, non-recyclables</i>
<b>vinyl records</b>	<i>dry, non-recyclables</i>
<b>wadding (cotton)</b>	<i>home compost or food waste collection</i>
<b>wallets</b>	<i>dry, non-recyclables</i>
<b>wallpaper</b>	<i>dry, non-recyclables</i>
<b>wardrobes (wooden )</b>	<i>refuse tip or bulky item collection</i>
<b>washbasins</b>	<i>refuse tip or bulky item collection</i>
<b>washer-dryers</b>	<i>refuse tip or bulky item collection</i>
<b>washing machines</b>	<i>refuse tip or bulky item collection</i>



## W

waste baskets made from metal	<i>refuse tip or bulky item collection</i>
waste baskets made from plastic	<i>refuse tip or bulky item collection</i>
wastepaper baskets	<i>refuse tip or bulky item collection</i>
watches	<i>refuse tip or bulky item collection</i>
water bottles	<i>plastic and metals</i>
watering cans made from plastic or metal	<i>refuse tip or bulky item collection</i>
wax candles (used)	<i>dry, non-recyclables</i>
wax paper	<i>dry, non-recyclables</i>
weedkiller and bug killer (100% clean, empty containers)	<i>plastic and metals</i>
wet wipes (empty container)	<i>plastic and metals</i>
wet wipes (made from paper)	<i>dry, non-recyclables</i>
wet wipes (not made from paper)	<i>dry, non-recyclables</i>
wheelbarrows	<i>refuse tip or bulky item collection</i>
wicker baskets	<i>refuse tip or bulky item collection</i>
window and door fittings (in quantities as specified by the urban sanitation regulations)	<i>refuse tip or bulky item collection</i>
windows	<i>refuse tip or bulky item collection</i>
wire glass (whole or broken pieces)	<i>refuse tip or bulky item collection</i>
wood (neither varnished nor treated)	<i>refuse tip or bulky item collection</i>
wood (painted and treated)	<i>refuse tip or bulky item collection</i>
wood heaters	<i>refuse tip or bulky item collection</i>
wood sawdust (painted or contaminated)	<i>dry, non-recyclables</i>
wood sawdust (unpainted and uncontaminated)	<i>home compost or food waste collection</i>
wood veneer	<i>refuse tip or bulky item collection</i>
wood wax	<i>dry, non-recyclables</i>
wooden boxes	<i>refuse tip or bulky item collection</i>

**W-X-Y**

wooden platforms	<i>refuse tip or bulky item collection</i>
wooden skirting boards	<i>refuse tip or bulky item collection</i>
wooden spoons	<i>refuse tip or bulky item collection</i>
wooden sticks for ice cream	<i>home compost or food waste collection</i>
wooden toothpicks	<i>home compost or food waste collection</i>
wool	<i>refuse tip or bulky item collection</i>
wrappers for pasta, rice, cereals, toothpaste, medicines, shoes, clothing etc made from cardboard	<i>paper and cardboard</i>
wrapping paper	<i>paper and cardboard</i>
wrapping ribbons	<i>plastic and metals</i>
writing pens	<i>dry, non-recyclables</i>
wrought iron objects	<i>refuse tip or bulky item collection</i>
X-ray film	<i>dry, non-recyclables</i>
yogurt (spoiled or out of date)	<i>home compost or food waste collection</i>
yogurt lids and pots	<i>plastic and metals</i>
yogurt pots (empty)	<i>plastic and metals</i>

COGESA SPA  
S.S. 17, KM 95,500



www.cogesambiente.it  
Tel. 0864 210429 | 800012490

## Paints are welcome at the Waste Centres



You can also deposit paint at all waste centres managed by Cogesa SpA.

Only private citizens (and not tradesmen or professionals such as painters and decorators for example) are permitted to take advantage of this new disposal service, which one hopes will help to reduce illegal waste dumping.

Paints and solvents which can be reused are, in fact, often found amongst the illegal dumps around the area.

### Waste Centres - Opening Times for the Public

#### 1. Raiano (via del Portone, near Il Pozzo):

Monday, Wednesday and Friday from 9.00am to 12.00pm, and on Saturday from 9.00am to 12.00pm and again from 2.00pm to 5.00pm

#### 2. Capestrano (near Tiro a segno):

Tuesday and Thursday from 9.00am to 12.00pm, and on Saturday from 9.00am to 12.00pm and again from 2.00pm to 5.00pm

#### 3. San Demetrio ne' Vestini (near Aspretta):

Monday, Wednesday from 9.00am to 12.00pm, and on Saturday from 2.00pm to 5.00pm

#### 4. Castelvechio Subequo (località Campo Famele):

Tuesday and Thursday from 9.00am to 12.00pm, and on Saturday from 9.00am to 12.00pm and again from 2.00pm to 5.00pm

#### 5. Castel di Sangro (Strada comunale dello Speno):

From Monday to Friday from 9.30am to 12.30am, Saturday from 9.30am to 12.30am and again from 2.30pm to 4.30pm, and Sunday from 2.00pm to 5.00pm

#### 6. Sulmona (via Vicenne, near Noce Mattei):

Every day from 10.00am to 5.00pm

#### 7. Villalago (near Vignaronica):

Saturday from 9.00am to 12.00pm and again from 2.00pm to 5.00pm

COGESA SPA  
S.S. 17, KM 95,500



www.cogesambiente.it  
Tel. 0864 210429 | 800012490

## White goods & electrical appliances welcome at the Waste Centres



### DISPOSAL OF ELECTRONIC AND ELECTRICAL EQUIPMENT

**Category R1** temperature and climate control appliances  
(fridges, air conditioners, water heaters, etc.)

**Category R2** large white goods  
(washing machines, dishwashers, ovens, hobs, etc.)

**Category R3** televisions and monitors

**Category R4** small electrical appliances,  
household electronics, light fittings etc

**Category R5** light sources

### Waste Centres - Opening Times for the Public

#### 1. Raiano (via del Portone, near Il Pozzo):

Monday, Wednesday and Friday from 9.00am to 12.00pm, and on Saturday from 9.00am to 12.00pm and again from 2.00pm to 5.00pm

#### 2. Capestrano (near Tiro a segno):

Tuesday and Thursday from 9.00am to 12.00pm, and on Saturday from 9.00am to 12.00pm and again from 2.00pm to 5.00pm

#### 3. San Demetrio ne' Vestini (near Aspretta):

Monday, Wednesday from 9.00am to 12.00pm, and on Saturday from 2.00pm to 5.00pm

#### 4. Castelvechio Subequo (località Campo Famele):

Tuesday and Thursday from 9.00am to 12.00pm, and on Saturday from 9.00am to 12.00pm and again from 2.00pm to 5.00pm

#### 5. Castel di Sangro (Strada comunale dello Speno):

From Monday to Friday from 9.30am to 12.30am, Saturday from 9.30am to 12.30am and again from 2.30pm to 4.30pm, and Sunday from 2.00pm to 5.00pm

#### 6. Sulmona (via Vicenne, near Noce Mattei):

Every day from 10.00am to 5.00pm

#### 7. Villalago (near Vignaronica):

Saturday from 9.00am to 12.00pm and again from 2.00pm to 5.00pm

COGESA SPA  
S.S.17, KM 95,500



www.cogesambiente.it  
Tel. 0864 210429 | 800012490

## Used vegetable oil is welcome at the Waste Centres



### What are used vegetable oils?

Vegetable oils at the end of their useful life: left overs from frying or from food conservation such as tins of tuna, artichokes and anchovies.

### What should you do with used vegetable oils?

They shouldn't just be tipped out as they can pollute the environment. If they get into the water purifying system they increase plant maintenance costs, and if they are poured down a domestic waste system they can block the drains.

### Waste Centres - Opening Times for the Public

#### 1. Raiano (via del Portone, near Il Pozzo):

Monday, Wednesday and Friday from 9.00am to 12.00pm, and on Saturday from 9.00am to 12.00pm and again from 2.00pm to 5.00pm

#### 2. Capestrano (near Tiro a segno):

Tuesday and Thursday from 9.00am to 12.00pm, and on Saturday from 9.00am to 12.00pm and again from 2.00pm to 5.00pm

#### 3. San Demetrio ne' Vestini (near Aspretta):

Monday, Wednesday from 9.00am to 12.00pm, and on Saturday from 2.00pm to 5.00pm

#### 4. Castelvechio Subequo (località Campo Famele):

uesday and Thursday from 9.00am to 12.00pm, and on Saturday from 9.00am to 12.00pm and again from 2.00pm to 5.00pm

#### 5. Castel di Sangro (Strada comunale dello Speno):

From Monday to Friday from 9.30am to 12.30am, Saturday from 9.30am to 12.30am and again from 2.30pm to 4.30pm, and Sunday from 2.00pm to 5.00pm

#### 6. Sulmona (via Vicenne, near Noce Mattei):

Every day from 10.00am to 5.00pm

#### 7. Villalago (near Vignaronica):

Saturday from 9.00am to 12.00pm and again from 2.00pm to 5.00pm



## Don't make these 25 mistakes



**COGESA SpA**

S.S. 17, KM 95,500

[www.cogesambiente.it](http://www.cogesambiente.it)

Tel. 0864 210429



- 1 - PIZZA BOXES (CLEAN)
- 2 - 'TETRAPAK' CONTAINERS
- 3 - PAPER NAPKINS (CLEAN)

- 4 - PIZZA BOXES (DIRTY)
- 5 - HAIR (FROM ANIMALS AND PETS)
- 6 - PAPER NAPKINS (DIRTY)

- 7 - ALUMINIUM OR TIN FOIL
- 8 - PLATES AND BEAKERS (PLASTIC)
- 9 - FOOD TRAYS (POLYSTYRENE)

- 10 - BEAKERS AND GLASSES (GLASS)
- 11 - HAIR (HUMAN)
- 12 - SMALL CERAMIC ITEMS (PLATES AND CUPS)
- 13 - PAPER TOWEL (DIRTY WITH DETERGENT)
- 14 - TILL RECEIPTS MADE FROM THERMOCHEMICAL PAPER

- 15 - MEDICINES
- 16 - BATTERIES

- 17 - CRATES AND TUBS
- 18 - BATTERIES (CAR)
- 19 - WHITE GOODS/ELECTRONICS
- 20 - TOYS
- 21 - ELECTRONIC EQUIPMENT/MATERIALS
- 22 - FURNITURE
- 23 - VEGETABLE OIL
- 24 - BUCKETS AND PAILS
- 25 - MIRRORS AND WINDOWS

- 1 - PAPER AND CARDBOARD
- 2 - PAPER AND CARDBOARD
- 3 - PAPER AND CARDBOARD

- 4 - HOME COMPOST / FOOD WASTE C.
- 5 - HOME COMPOST / FOOD WASTE C.
- 6 - HOME COMPOST / FOOD WASTE C.

- 7 - PLASTIC AND METALS
- 8 - PLASTIC AND METALS
- 9 - PLASTIC AND METALS

- 10 - DRY, NON-RECYCLABLES
- 11 - DRY, NON-RECYCLABLES
- 12 - DRY, NON-RECYCLABLES
- 13 - DRY, NON-RECYCLABLES
- 14 - DRY, NON-RECYCLABLES

- 15 - SPECIAL DISPOSAL UNIT
- 16 - SPECIAL DISPOSAL UNIT

- 17 - BULKY ITEM COLLECTION
- 18 - BULKY ITEM COLLECTION
- 19 - SPECIAL SECTION OF REFUSE TIP / BULKY ITEM COLLECTION
- 20 - BULKY ITEM COLLECTION
- 21 - SPECIAL SECTION OF REFUSE TIP / BULKY ITEM COLLECTION
- 22 - BULKY ITEM COLLECTION
- 23 - BULKY ITEM COLLECTION
- 24 - BULKY ITEM COLLECTION
- 25 - BULKY ITEM COLLECTION

- 1 - DRY, NON-RECYCLABLES
- 2 - DRY, NON-RECYCLABLES
- 3 - DRY, NON-RECYCLABLES

- 4 - DRY, NON-RECYCLABLES
- 5 - DRY, NON-RECYCLABLES
- 6 - DRY, NON-RECYCLABLES

- 7 - DRY, NON-RECYCLABLES
- 8 - DRY, NON-RECYCLABLES
- 9 - DRY, NON-RECYCLABLES

- 10 - GLASS
- 11 - HOME COMPOST / FOOD WASTE C.
- 12 - GLASS / BULKY ITEM COLLECTION
- 13 - HOME COMPOST / PAPER
- 14 - PAPER

- 15 - DRY, NON-RECYCLABLES
- 16 - DRY, NON-RECYCLABLES

- 17 - PLASTICS
- 18 - DRY, NON-RECYCLABLES
- 19 - DRY, NON-RECYCLABLES
- 20 - PLASTICS
- 21 - DRY, NON-RECYCLABLES
- 22 - DRY, NON-RECYCLABLES
- 23 - SINK DISPOSAL
- 24 - GLASS
- 25 - GLASS

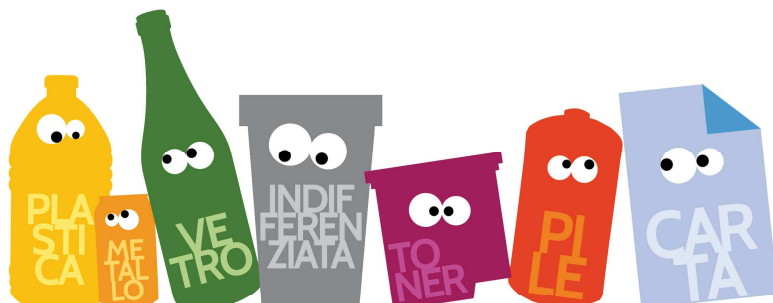
### Please use these bags:

- 1 - DRY, NON-RECYCLABLES
- 2 - HOME COMPOST/FOOD WASTE COLLECTION
- 3 - PLASTICS
- 4 - PAPER AND CARDBOARD
- 5 - GLASS

- 1 - TRANSPARENT OR SEMI-TRANSPARENT
- 2 - BIODEGRADABLE
- 3 - TRANSPARENT OR SEMI-TRANSPARENT
- 4 - TRANSPARENT OR SEMI-TRANSPARENT, LEFT LOOSE INSIDE
- 5 - NO BAG - PLEASE LEAVE LOOSE



**NO  
BLACK OR OPAQUE  
BAGS OR SACKS**



## WASTE INFORMATION OFFICE

Opening hours to the public: 8.00am to 4.00pm Monday to Friday, and from 8.00am to 1.30pm on Saturday.

Free collection service for bulky items - book by calling Freephone 800 012 490: from 8.30am to 1.30pm from Monday to Saturday. Just call to book a free collection from outside your house of your bulky waste items or your electronic or white goods. Waiting times for collections have been reduced to about 2 days.

The Cogesa information office is located on the SS 17 at KM 95,500 in Sulmona (AQ) but you can also get in touch by calling Freephone 800 012 490

The complaints department is open from 8.30am to 4.00pm Monday to Friday and from 9.00am to 1.00pm on Saturdays.

You can also email: [ufficioreclami@cogesambiente.it](mailto:ufficioreclami@cogesambiente.it)



### Waste Centres - Opening Times for the Public

#### 1. Raiano (via del Portone, near Il Pozzo):

Monday, Wednesday and Friday from 9.00am to 12.00pm, and on Saturday from 9.00am to 12.00pm and again from 2.00pm to 5.00pm

#### 2. Capestrano (near Tiro a segno):

Tuesday and Thursday from 9.00am to 12.00pm, and on Saturday from 9.00am to 12.00pm and again from 2.00pm to 5.00pm

#### 3. San Demetrio ne' Vestini (near Aspretta):

Monday, Wednesday from 9.00am to 12.00pm, and on Saturday from 2.00pm to 5.00pm

#### 4. Castelvechio Subequo (località Campo Famele):

Tuesday and Thursday from 9.00am to 12.00pm, and on Saturday from 9.00am to 12.00pm and again from 2.00pm to 5.00pm

#### 5. Castel di Sangro (Strada comunale dello Speno):

From Monday to Friday from 9.30am to 12.30am, Saturday from 9.30am to 12.30am and again from 2.30pm to 4.30pm, and Sunday from 2.00pm to 5.00pm

#### 6. Sulmona (via Vicenne, near Nace Mattei):

Every day from 10.00am to 5.00pm

#### 7. Villalago (near Vignaronica):

Saturday from 9.00am to 12.00pm and again from 2.00pm to 5.00pm

## **GENERAL RULES TO ENSURE THE BEST POSSIBLE COLLECTION OF SEPARATED WASTE**

Most of the waste we produce is made up of three main types of object: organic materials, packaging and bulky items.

Organic materials make up 30% of the waste. These are fruit and vegetable scraps, leftover, out of date or spoiled food, and cut flowers etc. Home or community composting is the preferred solution for treating organic materials. Alternatively they can be disposed of via the collection service.

Packaging makes up a further 50% of the waste. These are objects made of paper, glass, plastic, aluminum, steel or wood which are used to protect goods during transport from the producer to the end user.

Bulky items make up another 10% of the waste. These are old furniture, electrical appliances, mattresses, hardware & household fittings, and similar items.

Here are the general rules for the collection of packaged items.

1. Separate the packaging according to the materials from which it is made and put it in the appropriate collection container.
2. Reduce the packaging volume if possible. Crush the plastic bottles and seal them with the cap. Flatten paper and cardboard.
3. Where possible, separate packaging made from multiple materials, for example plastic containers for snacks from the cardboard tray.
4. It is not necessary to rinse the packaging but please do empty items before placing them in the various containers.
5. Kitchen paper soiled with food, soil or chemicals goes into the container for non-recyclable dry waste. The same goes for shop till receipts. Cellulose napkins which are dirty with food should be placed in the compost bin or disposed of with organic waste.



6. Tetrapak containers go in with the paper.
7. Glassware and crystal objects, ceramic, porcelain and pyrex crockery, and light bulbs should be put in with the non recyclable dry waste.
8. Put aluminum packaging into the plastic and metal container. Drinks cans, food trays and tins, tubes, cans and aluminium foil should also go in here.
9. Put steel packaging into the plastic and metal container. Steel packaging usually has the letters FE or ACC written on it - examples are cans and tins, buckets, bottle caps and various bottles and jars.
10. Put plastic packaging in the plastic and metal container. To find out where to dispose of toys, small plastic appliances and stationery etc, see the list of items in this manual.
11. Wooden packaging such as crates for fruit, wine, vegetables and small cheese boxes can be delivered direct to the ecocentres, or you can arrange for them to be picked up by Cogesa together with other bulky items.
12. Bulky items can only be delivered by users direct to one of the local ecocentres. or you can arrange for them to be picked up by Cogesa together with other bulky items.

**Please refer to your own Comune for the following information:**

- Local sanitation regulations
- Location and opening hours of your local 'Ecocentre' rubbish tip
- Location of special bins for the disposal of used batteries and medicines
- How to book a 'bulky item' collection from home
- Supply of your various coloured, domestic bins for door-to-door collection
- Signing up for, or cancelling, your TARI waste tax account
- Home or community composting services

# *Notes*





## COGESA S.P.A.

S.S. 17, KM 95,500  
67039—Sulmona (AQ)

[www.cogesambiente.it](http://www.cogesambiente.it) | [info@cogesambiente.it](mailto:info@cogesambiente.it)

TEL 0864 210429 | FAX 0864 209259

FREEPHONE NUMBER 800 012 490



## 2019 EDITION

Co-financed by the public announcement ANCI-CONAI 2018  
for local communication

(c) Cogesa S.p.A 2019. All rights reserved.